

Conference Information

Many software-intensive systems of the future will be of ultra-large size on one or many dimensions; number of lines of code; number of people employing the system for different purposes; amount of data stored, accessed, manipulated, and refined; number of connections and interdependencies among software components; number of hardware elements to which they interface. They will be ultra-large-scale (ULS) systems. Is the software community ready to tackle ULS systems? Will incremental changes in our current software development and management practices be sufficient?

The Software Engineering Institute (SEI) at Carnegie Mellon University led a team of experts in a study of ULS systems. The results of the study are documented in *Ultra-Large-Scale Systems: The Software Challenge of the Future* (ISBN 0-9786956-0-7). The SEI continues to nurture a community interested in exploring the associated challenges and promising research to address those challenges.

This forum will bring together experts involved in the study and those in the community interested in the growing trend toward ultra-large scale systems.

Who Should Attend?

Senior-level leaders in commercial, government and academic organizations who are involved with the development or acquisition of large, complex software-intensive systems such as those used in the healthcare, transportation, defense, and homeland security industries.

SMART Ultra-Large-Scale Systems Forum “Scale Changes Everything”



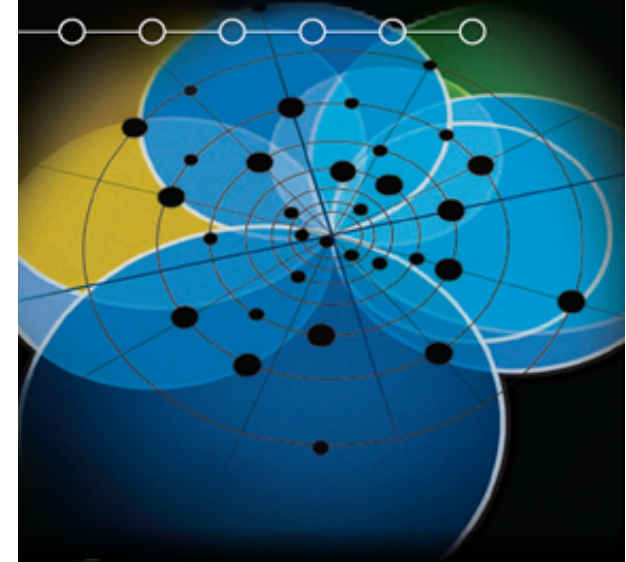
Contact Information

SMART ULSS
C/O Sabre Systems, Inc.
65 W. Street Road, Suite A-200
Warminster, PA 18974

Phone: 215.957.5222
Toll Free: 877.722.7379
Fax: 215.957.2786

Email: info@smartulss.com
Website: www.smartulss.com

SMART Ultra-Large-Scale Systems Forum “Scale Changes Everything”



Thursday, March 6, 2008
8:00 am – 5:30 pm
Carnegie Mellon University
Pittsburgh, PA

A SMART Event:



*Strengthening the Mid-Atlantic
Region for Tomorrow*

SMART

*Four States, One Region,
Infinite Possibilities...*

Hosted by:



Software Engineering Institute
Carnegie Mellon

Conference Agenda

8:00 am – 9:00 am

Registration / Continental Breakfast

9:00 am – 9:20 am

Opening Remarks

John Bramer, Director, Program Integration
Directorate, SEI

Bob Carullo, SMART

9:20 am – 10:45 am

Keynote: *The Impact of Scale*

Linda Northrop, SEI

10:45 am – 11:00 am

Break

11:00 am – 12:30 pm

Panel Discussion: *Issues of Scale: A Community Perspective*

Moderator:

John Goodenough, SEI

Panelists: Industry and Government Leaders

John Bloomer, CIO, Virtua Health

Bob Kent, Executive Director, SOSSEC

Patricia Hoffman, Principal Deputy Assistant Secretary,
Office of Electricity Delivery and Energy Reliability, DoE

Daniel J. Paulish, Siemens Corporate Research, Inc.

12:30 pm – 1:30 pm

Lunch

1:30 pm – 2:15 pm

Keynote: *Ultra-Large-Scale Systems in the Army*

Dr. Thomas H. Killion, United States Army, Chief Scientist

2:15 pm – 2:30 pm

Break

2:30 pm – 4:00 pm

Panel Discussion: *Promising Research Areas*

Moderator:

Linda Northrop, SEI

Panelists: ULS Systems Research Leaders

Richard P. Gabriel, IBM Research

John Goodenough, SEI

Mark Klein, SEI

Douglas C. Schmidt, Vanderbilt University

Kevin Sullivan, University of Virginia

Kurt Wallnau, SEI

4:00 pm – 5:30 pm

Exhibits and Reception



General Information

Conference

Registration to the conference includes unclassified sessions, continental breakfast, breaks, lunch, exhibits and a cocktail reception.

FEES:

Early Before 2/8/08

Government / Academia \$125 - Industry \$150

Regular 2/9/08-2/22/08

Government / Academia \$150 - Industry \$175

Late After 2/23/08

Government / Academia \$175 - Industry \$200

Exhibit Program & Cocktail Reception

An exhibit program and cocktail reception will be held at the University Center, Rangos 2, immediately following the conference. Congressional and Pennsylvania elected officials are invited.

Registration to the conference includes admittance to the exhibit program and cocktail reception. Tickets to only attend the exhibit program and cocktail reception are \$75. There is a discount for registrations received before February 22, 2008.

For more information and to register, please visit our website at www.smartulss.com.

Lodging

A block of rooms have been reserved at the following two locations. In order to ensure the discounted rate, you must make reservations before 2/13/08 and ask for the **SMART ULS Systems** room block.

Holiday Inn Select Pittsburgh at University Center (Oakland)

100 Lytton Avenue

Pittsburgh, PA 15213

412.682.6200

\$159 per night (single occupancy)

Wyndham Pittsburgh – University Place

3454 Forbes Avenue

Pittsburgh, Pennsylvania 15213

412.683.2040

\$139 per night (single occupancy)

Exhibitor Information

Exhibit opportunities are available for companies to display their products and technologies to industry, government and academic leaders. For more information, please visit our website at www.smartulss.com.

Sponsorships

Sponsorship Opportunities are available for companies to gain additional exposure and recognition at the conference. For more information, please visit our website at www.smartulss.com.